

BUILDING PERFORMANCE



Summary of Building Product Information Requirements

PURPOSE OF THIS RESOURCE

To help Aotearoa New Zealand based manufacturers, importers, wholesalers, distributors, and retailers understand and meet their responsibilities under the new building product information regulations.

BACKGROUND

New regulations have been made to provide building product users with a minimum level of easy-to-understand information about building products.

These regulations commence on 11 December 2023.

[Visit the Building Performance website for more information.](#)

WHY WERE THE REGULATIONS MADE?

The new regulations were developed to:

- help designers, builders and consumers choose the right products for their needs, install them correctly and make informed decisions about using alternative products if required
- enable more efficient consenting by providing building consent authorities with the right information, so it is readily available to check that plans will meet the Building Code
- result in fewer building defects, less building rework, more efficient consenting, and safer and more durable buildings.

WHAT RESPONSIBILITIES WILL I HAVE?

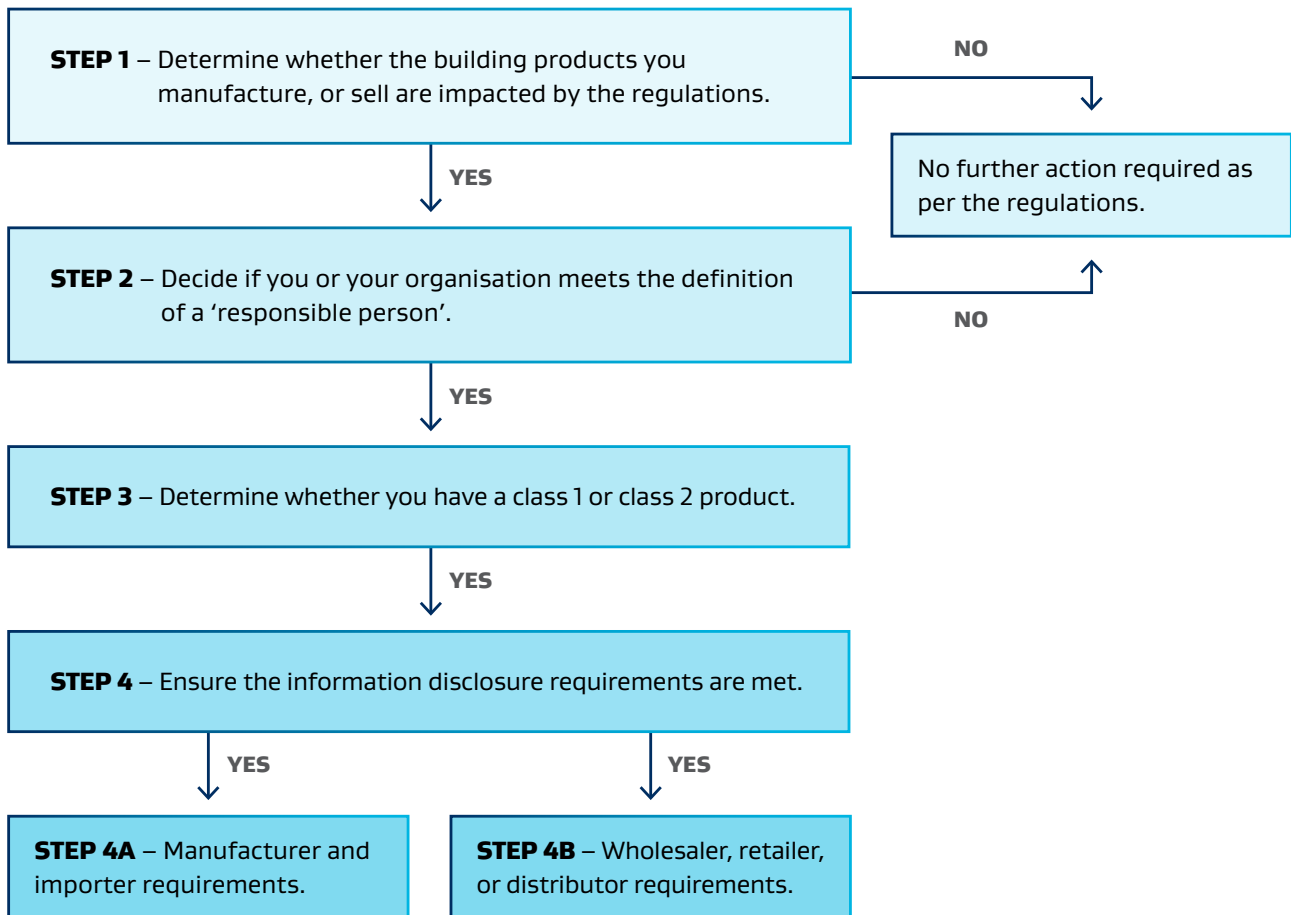
Aotearoa New Zealand based manufacturers and importers of certain building products must prepare the required information and ensure it is both provided with their products and made available online.

Aotearoa New Zealand based wholesalers, distributors, and retailers will be responsible for ensuring this information is available at the point of sale, or point of order for customisable products.

WHAT ARE MY NEXT STEPS?

Use these steps to understand whether the regulations apply to you, and if they do, what you need to do to comply.

Detailed information about each of these steps can be found in [MBIE's guidance document](#).



STEP 1 – DETERMINE WHETHER THE BUILDING PRODUCTS YOU MANUFACTURE, OR SELL ARE IMPACTED BY THE REGULATIONS.

The regulations only apply to products that are:

- manufactured in or imported into Aotearoa New Zealand on or after 11 December 2023
- new rather than used
- either mass-produced or produced in batches, or based on a line of products where each unit has been customised
- used in building work and affect whether the building work complies with the New Zealand Building Code
- not exempt from the regulations (eg products with a CodeMark certificate, temporary products like scaffolding, frames and trusses, electrical or gas products).

If your product does not meet all the points above, then it is not impacted by the new regulations, and you do not need to go to Step 2.

However, if it does, go to Step 2.

STEP 2 – DECIDE IF YOU OR YOUR ORGANISATION MEETS THE DEFINITION OF A 'RESPONSIBLE PERSON'.

If your product(s) are impacted by the regulations, the next step is to decide if you meet either of the definitions below:

- a manufacturer or importer of a building product, who lives or is incorporated in Aotearoa New Zealand; or
- a wholesaler, retailer or distributor of a building product, who lives or is incorporated in Aotearoa New Zealand.

If you meet one (or both) of the descriptions above, go to Step 3.

If you do not meet either of the definitions above, then you are not impacted by the new regulations, and you do not need to go to Step 3.

STEP 3 – DETERMINE WHETHER YOU HAVE A CLASS 1 OR CLASS 2 PRODUCT.

A class 1 product is mass-produced or produced in batches to a general specification. A class 2 product is based on a line of products where each unit is customised to the specification of an individual client.

Examples

CLASS 1

- cladding (eg weatherboard)
- mechanical fixings (eg nails, screws)
- insulation (eg wall, ceiling)
- internal lining (eg plasterboard)
- roofing (eg membrane roofing)
- structural wood-based products (eg structurally graded timber)
- structural steel and reinforcing (eg reinforcing mesh)
- sanitary plumbing and drainage (eg shower mixers, bath spouts).

CLASS 2

- external window joinery, doors, and skylights that have been customised
- customised concrete mixes
- fire doors and windows (or other specialty doors), fire alarms or sprinkler systems that have been customised for a customer.

Each class has slightly different disclosure information requirements, but the main distinction is when the information must be provided. The intent is that consumers have access to information about a building product before they purchase it.



STEP 4 – ENSURE THE INFORMATION DISCLOSURE REQUIREMENTS ARE MET.

If you are a manufacturer or importer, ensure you meet all the disclosure requirements by using MBIE's checklist.

MBIE has also created exemplars and blank templates which you can add your information into. These are available for class 1 and class 2 building products and using them is optional.

For wholesalers, retailers, and distributors there is further information on our website for how to display the necessary information online or in store.

FURTHER HELP:

- visit the [Building Performance website](#) for more detailed information
- [checklist for manufacturers and importers](#) can be used to compare current information against what is required
- MBIE's examples of class 1 and class 2 building products will help manufacturers and importers understand how to provide the required product information
- email Products@mbie.govt.nz if you have further questions about the regulations.

